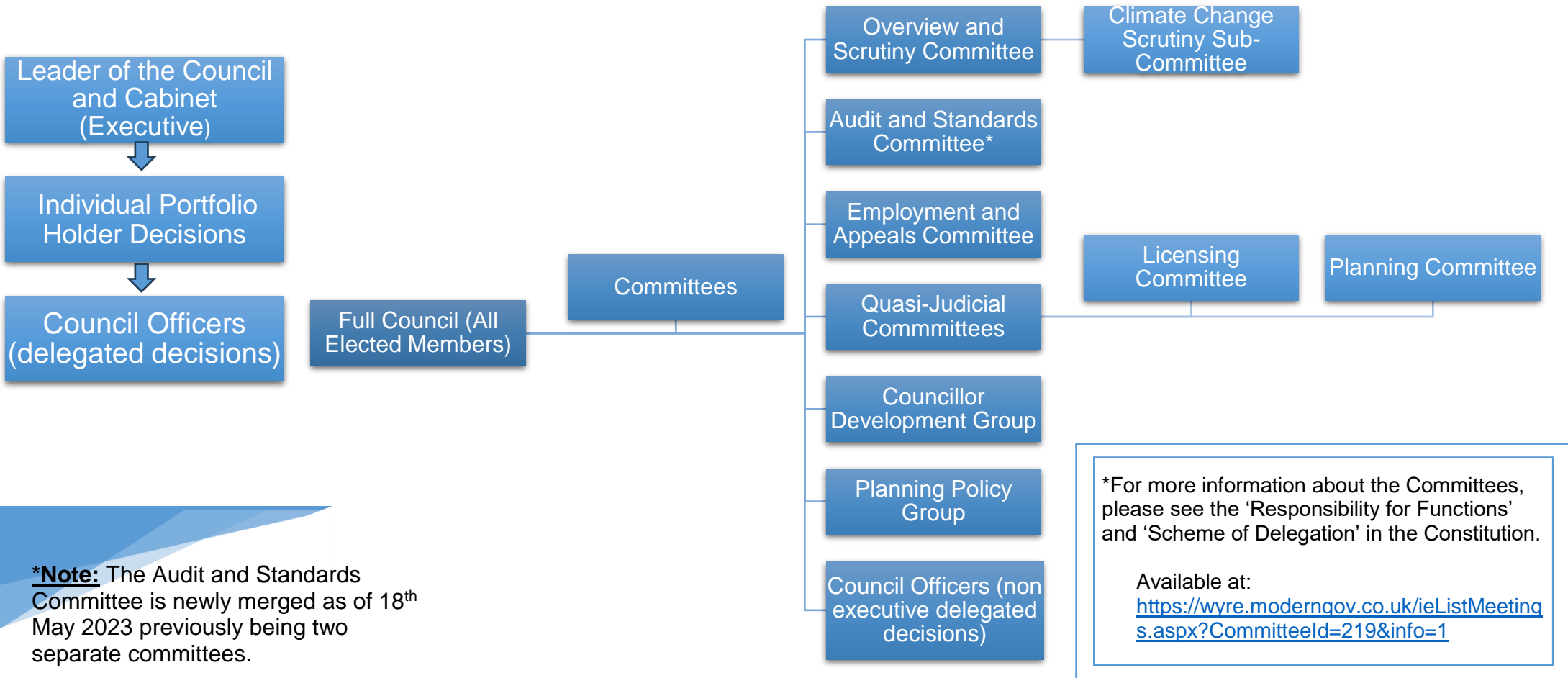


Decision-making at Wyre Borough Council

Wyre Council operates under the executive model of decision-making, with a Leader and a Cabinet making-up the Executive. The Full Council approves the council’s overall budget, policy framework and delegates authority to specific committees to take decisions on its behalf.

The flowchart below shows the pattern of decision-making at the council. The Cabinet, individual portfolio holders, and council officers can take executive decisions. The Full Council has delegated authority to each of the committees shown below.

The Climate Change Scrutiny Sub-Committee was established on 12th June 2023 in the interests of climate change matters affecting the Borough of Wyre. *



***Note:** The Audit and Standards Committee is newly merged as of 18th May 2023 previously being two separate committees.

*For more information about the Committees, please see the 'Responsibility for Functions' and 'Scheme of Delegation' in the Constitution.

Available at:
<https://wyre.moderngov.co.uk/ieListMeetings.aspx?CommitteId=219&info=1>