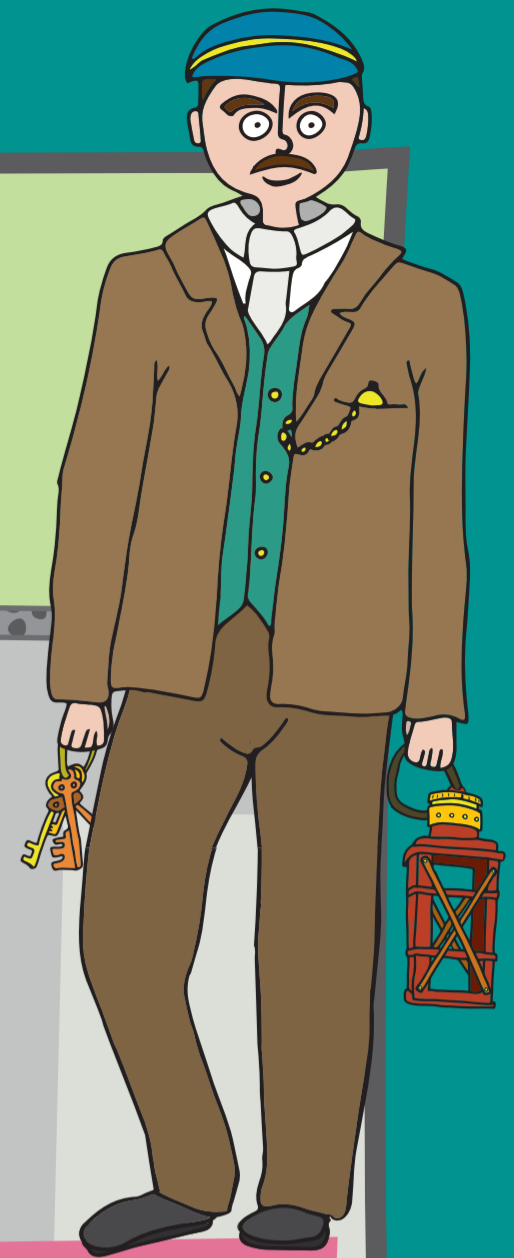
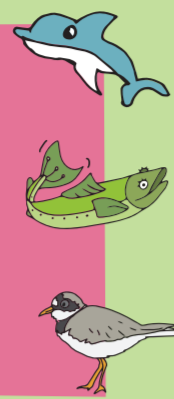


The Pavilion Keeper of The Mount



Marine life

The sea around you is full of amazing creatures: dolphins, porpoises and seals zoom through the sparkling waters and little birds like ringed plovers and turnstones scamper on the beaches looking for snacks. You can learn more about the estuary and its wildlife by reading 'The Little Cucumber Fish of Wyre' Tale Trail. You can download the map and story for free by visiting the 'Living Seas North West' website livingseasnw.org.uk



The view

The view Visitors have taken pleasure in gazing at the stunning views of the Lake District hills across Morecambe Bay for decades. Can you spot the beach, your home maybe or any seabirds from the top of The Mount?



NORTH
Morecambe Bay and
The Lake District

Perfect Picnic spot

In the Georgian times Starr Hill was a very popular picnic spot for locals who came to take in the fresh sea air and wonder at the hundreds of gulls that nested on the dune. Apparently there were plenty of nests to marvel at as well.



Fascinating folklore

Apparently one of the oldest ghosts of Lancashire lives near Fleetwood. He is called the Hairy Boggart; half man and half beast and a terrible menace around the home! Boggarts like to steal things, pull your ears at night and play naughty jokes to annoy people. If you spot a hole in the ground, take care as a boggart might live there; but don't worry, you can protect yourself by keeping some salt in your pocket!!



Regency Gardens

were created in the early 1800s. They are a magical and imaginative type of planned garden that include dark and light areas, shrubberies and rockeries, tea rooms, amazing views, pavilions and circular paths that wind around them.

Navigation

A really clever navigation system was designed by a man called Captain Henry Mangles Denham, who became an admiral in the Navy and had mapped many coastal areas before. He used The Mount, the Wyre Light and the two Pharos lighthouses (designed by Burton and Denham) to help guide ships into the port. The flagstaff on the first pavilion sent signals to the ships at sea.



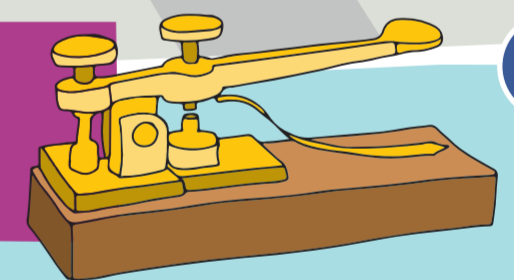
Swamps and settlers

Many thousands of years ago, the sea levels were much lower than they are today. The bay area was covered in vast wet woodlands where wild boar and wolves roamed. Celtic tribes hunted here and Vikings raided coastal villages. Romans constructed long, straight roads along the coast and a Northman named Haakon built his longhouse nearby. It has been a really important area for thousands of years.



Can you...

tap out your own name in Morse Code using dots and dashes?



A	.-	J	.-.-.-	S	...-	1	.-.-.-
B	-...-	K	.-.-	T	-	2	..-.-
C	-.-.-	L	.-..	U	..--	3	...-
D	-.-.	M	--	V	..--	4-
E	..	N	-.-	W	-.--	5
F	..-.-	O	--	X	..-.-	6-
G	-.--	P	.-.-	Y	-.--	7	-...-
H	Q	.-.-.-	Z	..--	8	-...-
I	..	R	.-.			9	-...-
						0	-----

Entrance Lodge

There is a fantastic new tea room being developed and a work space for local artists and scientists to run activities too.



Take Care
This adventure takes you around the paths of The Mount which are suitable for buggies and wheelchairs, however some paths have a steep gradient. Assistance may be required to get to the top in manual wheelchairs, however motorised wheelchairs would be suitable for this site. Please share spaces responsibly, keep dogs on a lead and watch wildlife from a distance. Please take away any litter or place it in bins provided to prevent damage to wildlife and wild places.
Discover more at www.taletrails.co.uk

Contact Details
For enquiries please contact the Parks & Open Spaces team on 01253 891000.
Copyright © 2021 Wyre Council www.wyre.gov.uk
Map illustration and design by Custard Graphic Design www.custard-graphic-design.co.uk

Supported by:

