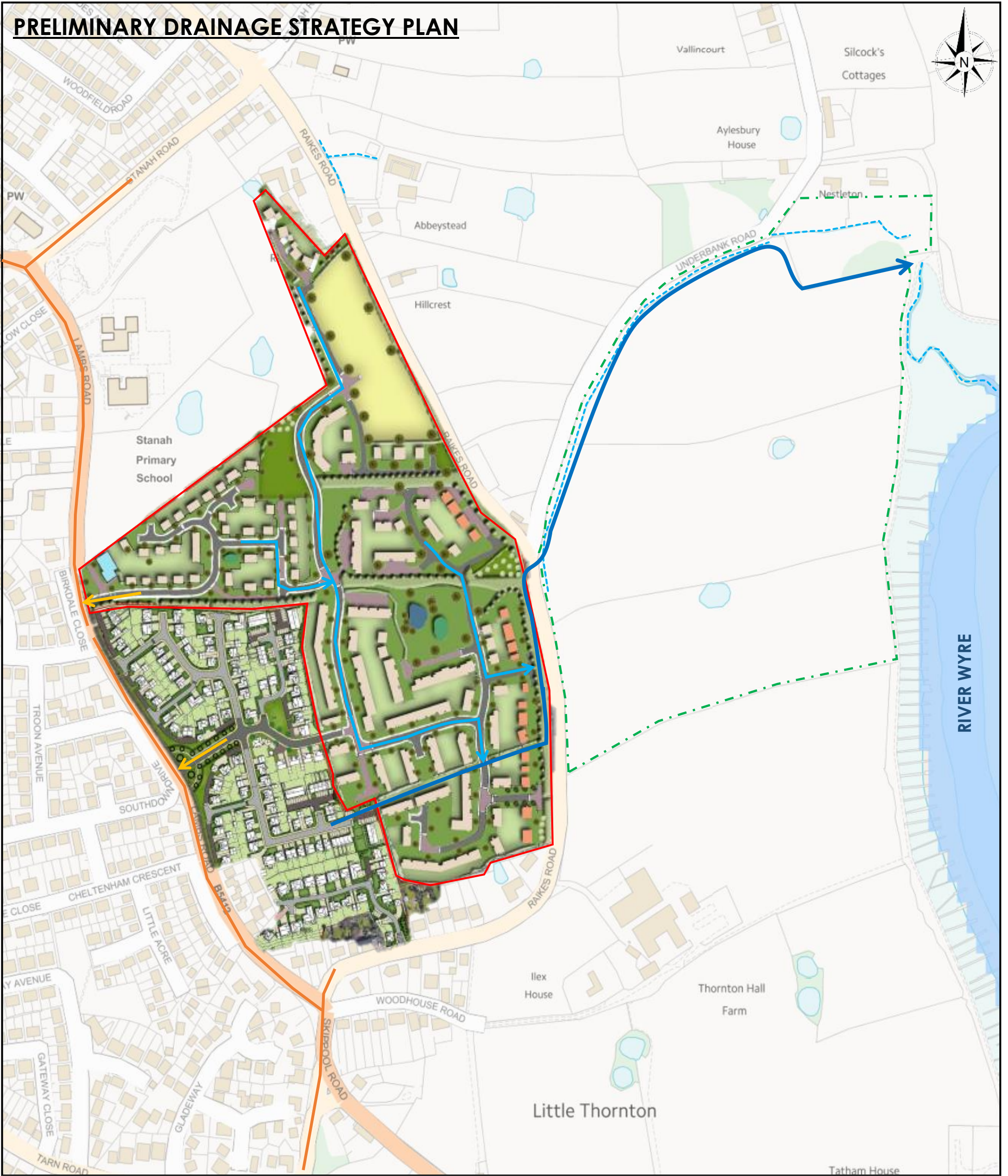


PRELIMINARY DRAINAGE STRATEGY PLAN



LEGEND:

- Site Extent
- Land in Control of Developer
- Existing Land Drainage/Ordinary Watercourse
- ➔ Surface Water Connection Constructed to Serve Phase 1 (currently existing)
- ➔ New Proposed Surface Water Connection for Masterplan
- ➔ Connection into Existing UU Public Foul Water Sewer

DRAINAGE OPTIONS:

- Surface Water**
- Discharge to River Wyre (via adjacent sewer length/new sewer length)**
 - ➔ Gravity solution possible
 - ➔ Offsite works (but within land controlled by developer)
 - ➔ Outfall Agreements from WC/UU (if new sewer infrastructure adopted)
- Foul Water**
- Discharge to public sewer network**
 - ➔ Gravity solution possible
 - ➔ Offsite works (highway to be agreed with WC)
 - ➔ Agreements from UU for works to public sewer